

DESCRIPTION AND RATING

TWIN DIODE GL-6202

FIVE-STAR TUBE



The GL-6202 is a miniature full-wave high-vacuum rectifier intended for use in power supplies in which the d-c current requirements do not exceed 50 milliamperes. Within the limitations of its maximum ratings, the GL-6202 is a replacement for the 6X4.

The GL-6202 is specially designed to assure dependable life and reliable service under the exacting conditions encountered in mobile and aircraft applications. Features include a high degree of mechanical strength and a heater-cathode construction designed to withstand many-thousand cycles of intermittent operation. This tube may be used in applications which are subjected to altitudes as high as 60,000 feet.

TECHNICAL INFORMATION

GENERAL

Electrical

Cathode - Coated Unipotential

Heater Voltage (A-c or D-c)	6.3	Volts
Heater Current	0.6	Ampere

Mechanical

Mounting Position - Any
Envelope - T-5 1/2, Glass
Base - Miniature Button 7-pin, E7-1

MAXIMUM RATINGS

Electrical*, Design-center Values

Rectifier Service - Sinusoidal Supply Voltages, Frequency Range
25 to 1000 Cycles per Second

Peak Inverse Plate Voltage

Altitudes up to 40,000 Feet†	1250	Volts
------------------------------	------	-------

Altitudes from 40,000 to 60,000 Feet†	850	Volts
---------------------------------------	-----	-------

A-c Plate-supply Voltage, per Plate, RMS - See Rating Chart I‡

Steady-state Peak Plate Current per Plate	200	Milliamperes
---	-----	--------------

Transient Peak Plate Current per Plate,

Maximum Duration 0.2 Second	1.45	Amperes
-----------------------------	------	---------

D-c Output Current - See Rating Chart I‡

Heater-cathode Voltage

Heater Positive with Respect to Cathode	100	Volts
---	-----	-------

Heater Negative with Respect to Cathode	450	Volts
---	-----	-------

Mechanical

Peak Impact Acceleration§	700	G
---------------------------	-----	---

Bulb Temperature at Hottest Point (Absolute Maximum)	+165	C
--	------	---

CHARACTERISTICS AND TYPICAL OPERATION

Full-wave Rectifier, Altitudes up to 40,000 Feet

	Capacitor Input Filter	Choke Input Filter	
A-c Plate-supply Voltage per plate, RMS	325	450	Volts
Filter Input Capacitor	4	---	Microfarads
Filter Input Choke	---	8	Henrys
Total Plate-supply Resistance per plate	175	---	Ohms

CHARACTERISTICS AND TYPICAL OPERATION (CONT'D)

Full-wave Rectifier, Altitudes up to 40,000 Feet

	Capacitor Input Filter	Choke Input Filter	
D-c Output Current	50	50	Milliamperes
D-c Output Voltage at Filter Input	365	375	Volts
Tube Voltage Drop			
Measured with Applied D-c at 50 Milliamperes per Plate		22	Volts

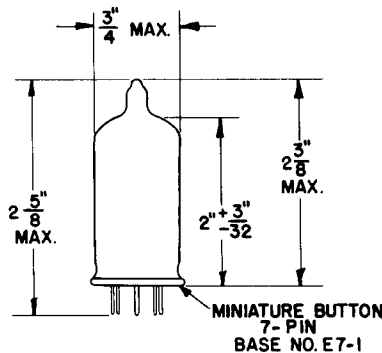
* To simplify the application of the maximum ratings to circuit design, the electrical design-center maximum ratings are also presented in chart form as Rating Charts I, II, and III. Rating Chart I presents the maximum ratings for a-c plate-supply voltage and d-c output current. Rating Chart II provides a convenient method for checking conformance with the maximum steady-state peak plate current rating. Rating Chart III offers a convenient method for checking conformance with the maximum transient peak plate current rating.

With a capacitor-input filter, the conditions of each of Rating Charts I, II, and III must be satisfied in order to obtain performance within all of the appropriate electrical maximum ratings. With a choke-input filter, operation within the indicated boundary of Rating Chart I will assure performance within all of the appropriate electrical maximum ratings.

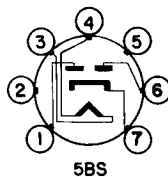
† The altitude ratings as presented refer to the limitations of the tube itself. Because the socket employed can become the limiting factor in high-altitude operation, consideration must be given to the voltage-breakdown capabilities of the tube and socket combination employed.

‡ The maximum ratings for a-c plate supply voltage and d-c output current are inter-related and are also dependent on whether a choke or capacitor-input filter is employed. This relationship is shown in Rating Chart I. With a capacitor-input filter, the operating point of d-c output current and a-c supply voltage must fall within the curve FAEDG. With a choke-input filter, the operating point must fall within the curve FABCDG.

§ Forces in any direction as applied by the Navy-type, High Impact (flyweight) Shock Machine for Electronic Devices or its equivalent.

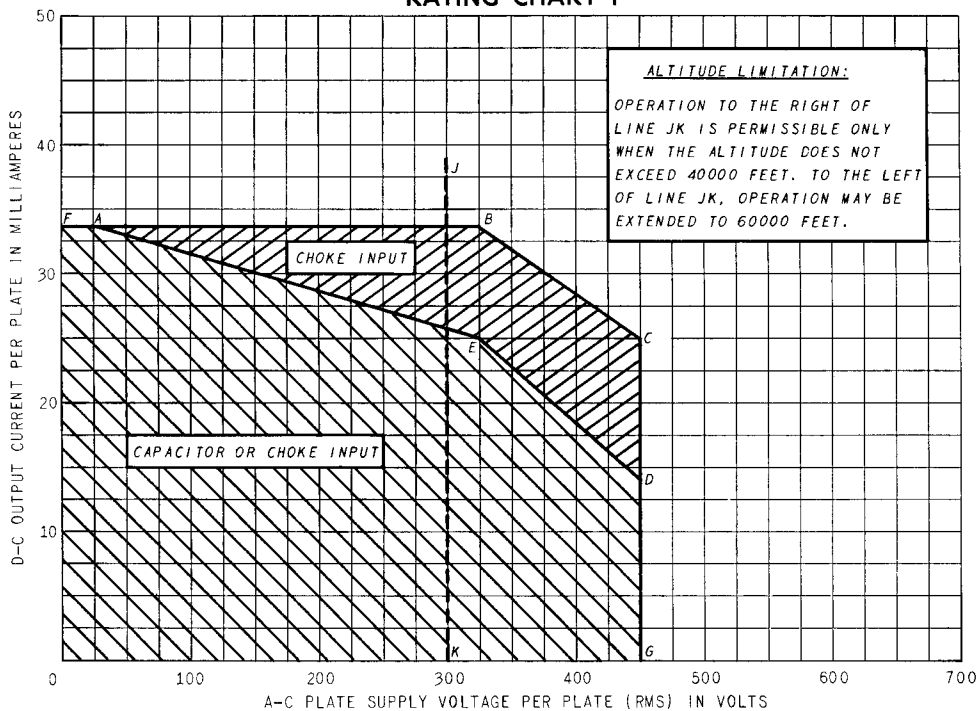


BASING DIAGRAM



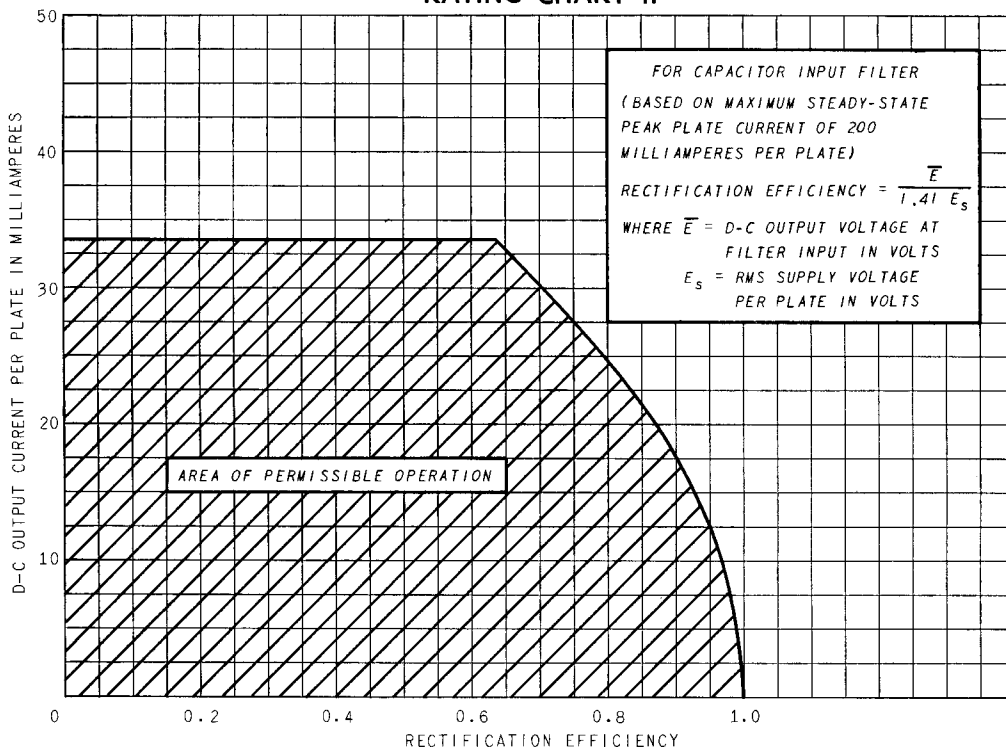
- PIN 1: PLATE NUMBER 2
- PIN 2: NO CONNECTION
- PIN 3: HEATER
- PIN 4: HEATER
- PIN 5: NO CONNECTION
- PIN 6: PLATE NUMBER 1
- PIN 7: CATHODE

RATING CHART I



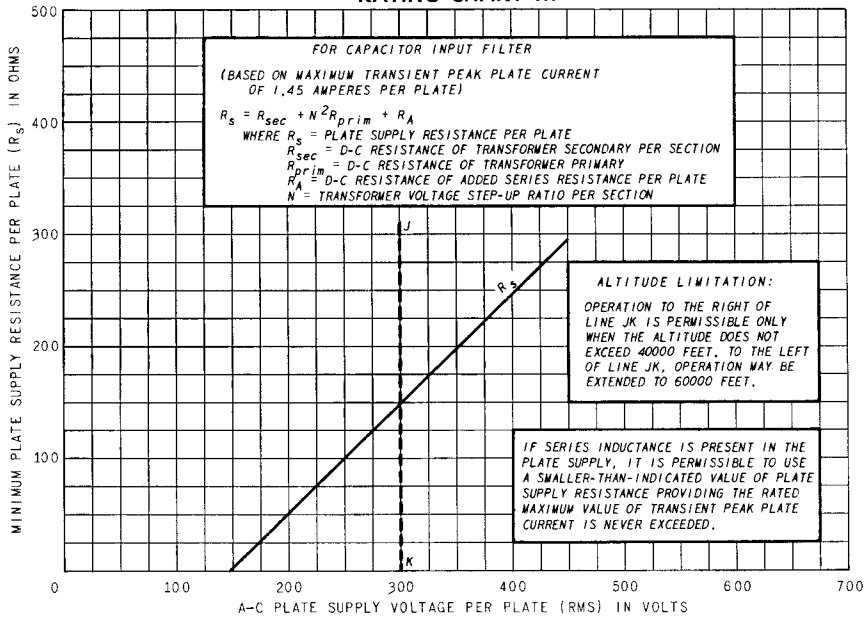
February 12, 1953

RATING CHART II



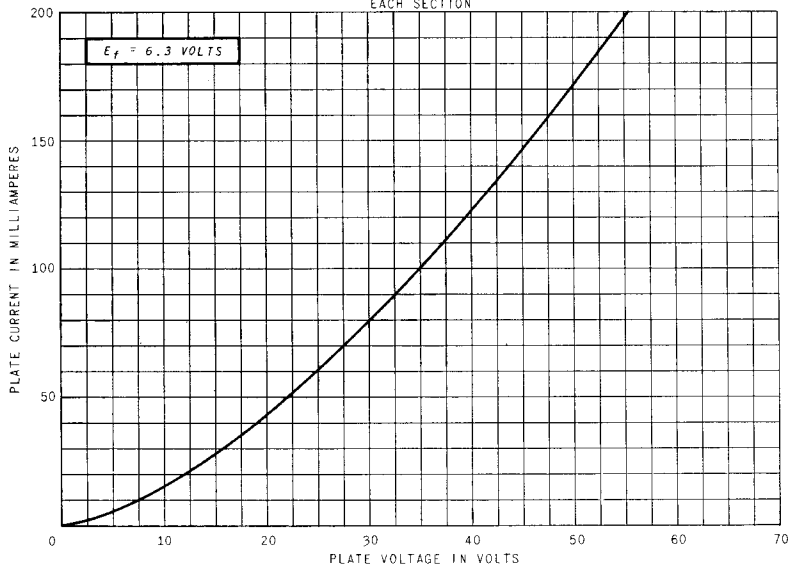
February 12, 1953

RATING CHART III



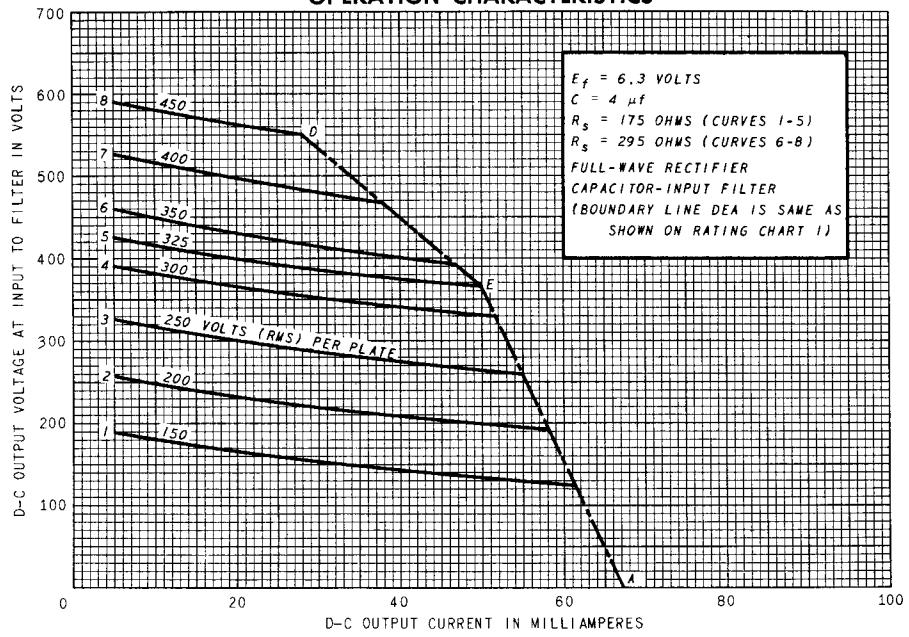
February 12, 1953

AVERAGE PLATE CHARACTERISTICS



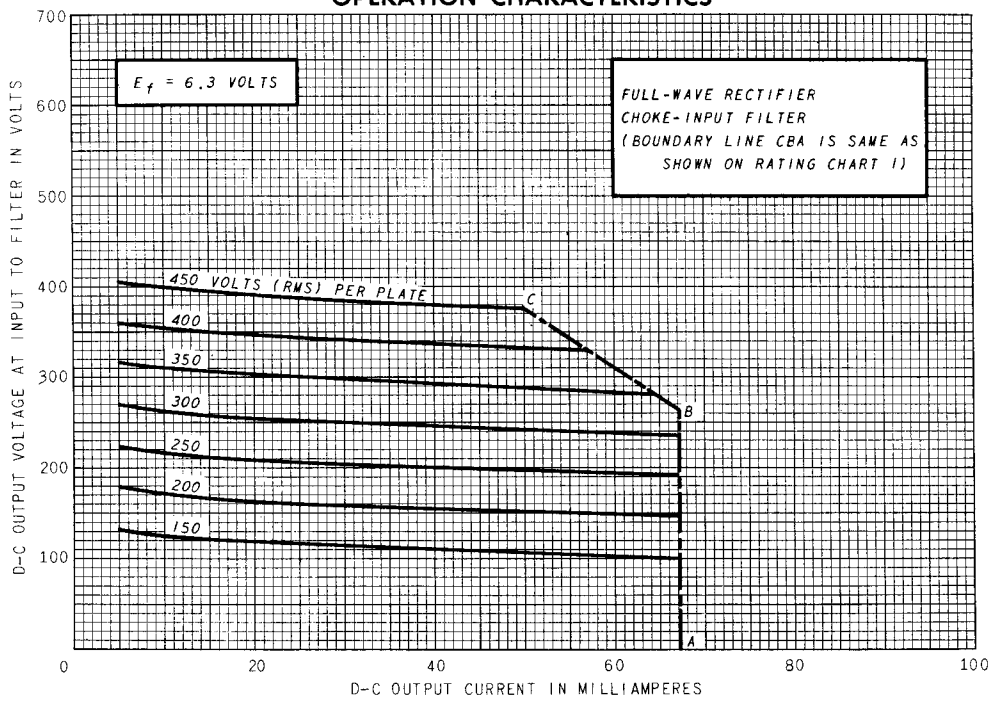
February 12, 1953

OPERATION CHARACTERISTICS



February 12, 1953

OPERATION CHARACTERISTICS



February 12, 1953

TUBE DEPARTMENT
GENERAL  **ELECTRIC**
Schenectady 5, N. Y.